



DIGITAL MANUFACTURING. REIMAGINED.™

Comprehensive Medical Component Manufacturing Expertise

From Prototype to Production //

Bring Your Medical Product Ideas to Market Faster

Are you seeking a manufacturing partner with a wide breadth of expertise in a range of technologies that can help you **move your medical products through the product development process faster**? It's time to take a closer look at Fathom Manufacturing.



Breadth of Experience

Across our network of manufacturing locations, Fathom has decades of experience in manufacturing for the medical industry.



Expertise

From device enclosures and surgical tools to orthopedic implants and spinal screws, Fathom has helped medical OEMs develop and manufacture a vast range of medical products.



Industry Knowledge

Fathom has a deep understanding of the forces that are shaping your business – from accelerating new product innovation lifecycles to evolving hospital system procurement processes.



Broad Portfolio of Technologies

Our broad portfolio of 25+ manufacturing technologies covers everything from CNC machining and metal forming to injection molding and the latest additive technologies.



Certifications

Fathom maintains several certifications across our nationwide manufacturing network to ensure all parts are produced to exacting specifications and requirements. For specific Fathom locations and their certifications, please visit www.fathommfg.com/fathom-manufacturing-certifications.

Why Fathom For Your Medical Part Manufacturing Needs?

Fathom Manufacturing is a one-stop manufacturing solution for the world's leading companies. **We combine a breadth of manufacturing technologies with an unmatched depth of engineering expertise.** Our blue-chip customers leverage our over 25+ manufacturing technologies to simplify their supply chains and shorten the time to market for new product innovations.

Fathom brings decades of medical industry expertise to the table. In short, when you partner with us, **you get access to a whole team of experienced people who will provide you with the advice and expertise you need to keep your projects moving smoothly and achieve the best results.**

Our personalized problem-solving approach is perfectly aligned with the needs of discerning medical manufacturers. We take a "human-first" approach to conducting DFMs, ensuring that your part designs are optimized for cost-effective, high-quality production and helping you avoid time-consuming and costly missteps during the product development process.

Additive Manufacturing

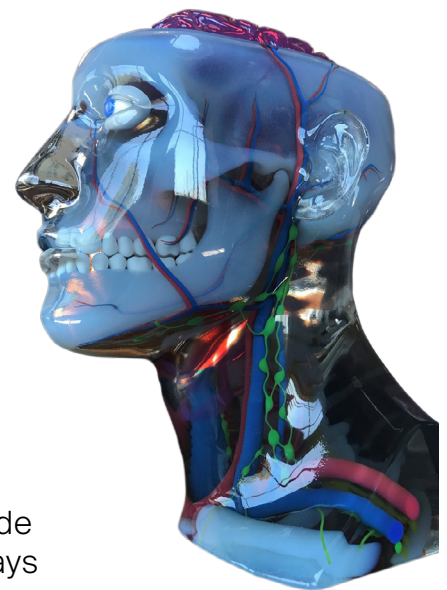


Additive manufacturing, or 3D printing, is well-suited to:

- **Rapid Prototyping**, enabling you to quickly iterate and validate the fit and finish of your part designs,
- **Bridge Production**, enabling you to ship initial quantities of products sooner, while you're waiting for tooling to be produced, and in some cases,
- **Low-to-Mid Volume Production.**

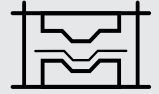
Additive manufacturing is used to produce parts for many segments of the medical industry, including:

- | | | |
|----------------------|-----------------------|-----------------|
| • Medical Imaging | • In-Home Care | • Prototypes |
| • Orthopedics | • Training | • Medical Trade |
| • Patient Monitoring | • Product Development | • Show Displays |
| • Rehabilitation | | |



Examples of Parts Fathom Has Produced // Equipment housings and covers, patient tables and supports, components for imaging equipment.

Metal Cutting & Forming



Sheet metal fabrication is widely used to build larger components for the medical industry, including:

- Carts
- Plates
- Covers
- Frames
- Enclosures
- Doors
- Assemblies
- Other applications where strength and durability are a must.



Small, precision sheet metal components are used in several medical specialties, including medical devices, life sciences, biotechnology, diagnostics equipment and surgical and medical instruments. And small, precise metal parts produced using photo chemical etching are used in a variety of medical devices.

Examples of Parts Fathom Has Produced // Carts, housings, doors, brackets, covers, plates, electrical connectors, flat springs.

CNC Machining



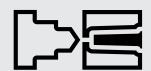
CNC machining is used to fabricate a variety of high-precision parts for in-body and out-of-body applications. Often, these parts are manufactured to exacting standards from high-performance materials including titanium, Inconel, niobium and molybdenum.

Examples of Parts Fathom Has Produced //

Prosthetics, implants, bone drills, spinal screws, surgical instruments, catheters and stents.



Injection Molding



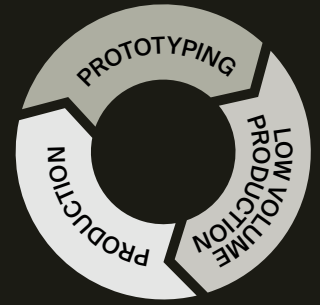
Injection molding is the workhorse of medical equipment and devices. It's a cost-effective option for a diverse universe of patient care, diagnostics and monitoring solutions. In addition to domestic part production, Fathom offers an overseas option for customers who need a more affordable alternative.

Examples of Parts Fathom Has Produced // Drain tubes, delivery tubes, IV connectors, syringes, housings, drug delivery systems.



Support Throughout the Product Lifecycle

Fathom supports its medical customers from the early product development stage and prototyping through bridge and full production. We're organized to help you streamline your supply chain and accelerate your time to market - a key priority for big manufacturers and startups alike in the dynamic medical industry.



Real Customers. Real Results.

Medicasafe, Inc., a medical technology innovator, designed a revolutionary device to address the epidemic of Opioid Use Disorder (OUD). This unique product features sublingual medications enclosed in tamper-evident cartridges, dispensed through a SmartKey. It logs and reports each authorized dose, ensuring that patients only take them as prescribed.

Fathom provided the expertise needed to refine the design of its cartridge and SmartKey to **improve the product's manufacturability, while maintaining stringent material and production documentation compliance needs**. Fathom produced tooling and injection-molded prototypes within weeks, helping MedicaSafe manage its product development costs.



Talk to an Expert

Working with Fathom means easy access to Additive and Advanced manufacturing experts.

Contact us today, and let's transform the future of manufacturing together!

➤ go.fathommfg.com/expert

👤 expert@fathommfg.com

☎ 877-FATHOM-8

Headquarters // 1050 Walnut Ridge Dr. Hartland, WI 53029

Offices // Hartland, WI | Tempe, AZ | Oakland, CA | Denver, CO | Miami Lakes, FL | McHenry, IL
Newark, NY | Ithaca, NY | Elk Grove, IL | Ham Lake, MN | Round Rock, TX | China

FATHOM
DIGITAL MANUFACTURING. REIMAGINED.
FathomMfg.com